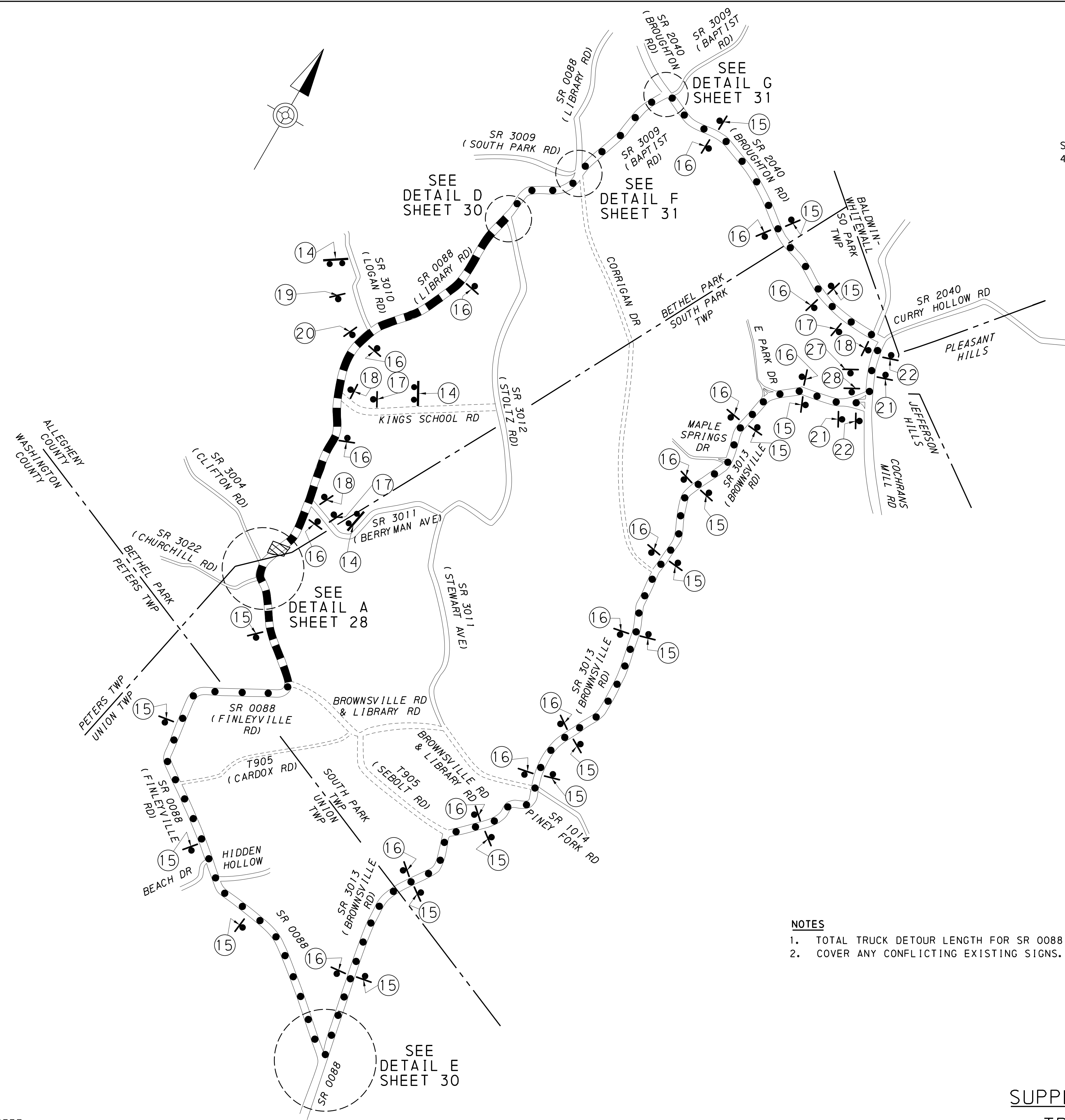


DISTRICT	COUNTY	ROUTE	SECTION	SHEET
11-0	ALLEGHENY	0088	A23	27 OF 68
SOUTH PARK TOWNSHIP & BETHEL PARK				
REVISION NUMBER	REVISIONS	DATE	BY	APPROVED

SIGN LEGEND

SPECIAL-19 48"X30"	14	TRUCKS FOLLOW TRUCK DETOUR	15	TRUCK DETOUR NORTH	16	TRUCK DETOUR SOUTH									
	M4-8-2 24"X24"	M3-1 24"X12"	M1-5 24"X24"	M6-3 21"X15"	M4-8-2 24"X24"	M3-3 24"X12"	M1-5 24"X24"	M6-3 21"X15"							
17	TRUCK DETOUR SOUTH	18	TRUCK DETOUR SOUTH	19	TRUCK DETOUR SOUTH	20	TRUCK DETOUR SOUTH	21	TRUCK DETOUR NORTH	22	TRUCK DETOUR NORTH	27	TRUCK DETOUR SOUTH	28	TRUCK DETOUR SOUTH
M4-8-2 24"X24"	M3-3 24"X12"	M1-5 24"X24"	M5-1R 21"X15"	M4-8-2 24"X24"	M3-1 24"X12"	M1-5 24"X24"	M5-1L 21"X15"	M4-8-2 24"X24"	M3-3 24"X12"	M1-5 24"X24"	M6-1 21"X15"	M4-8-2 24"X24"	M3-3 24"X12"	M1-5 24"X24"	M5-2R 21"X15"



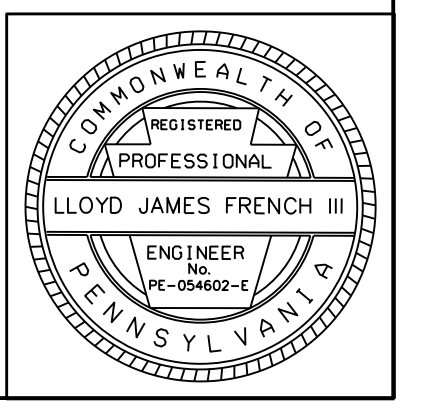
LEGEND

	WORK ZONE
	SIGN ON TYPE III BARRICADE
	POST MOUNTED SIGN
	SR 0088 DETOUR ROUTE
	SR 0088 TRUCK DETOUR ROUTE
	TOWNSHIP/BOROUGH LINE
	STATE ROUTE
	MUNICIPALITY/LOCAL ROUTE/BOROUGH STREET
R11-2	TYPE OF SIGN

NOT TO SCALE

- NOTES**
- TOTAL TRUCK DETOUR LENGTH FOR SR 0088 IS 13.8 MILES.
 - COVER ANY CONFLICTING EXISTING SIGNS.

**STAGE 2
SUPPLEMENTAL TRUCK DETOUR
TRAFFIC CONTROL PLAN**



8/16/2018 8:35:26 AM -wiz- P:\Projects\current_projects\03266 D11 SR88SR3004 (Cliffon Rd) (Mack) \Design\Traffic Control\Plans\Detour_Maps\SR 88-A23 TCP Detour.dgn