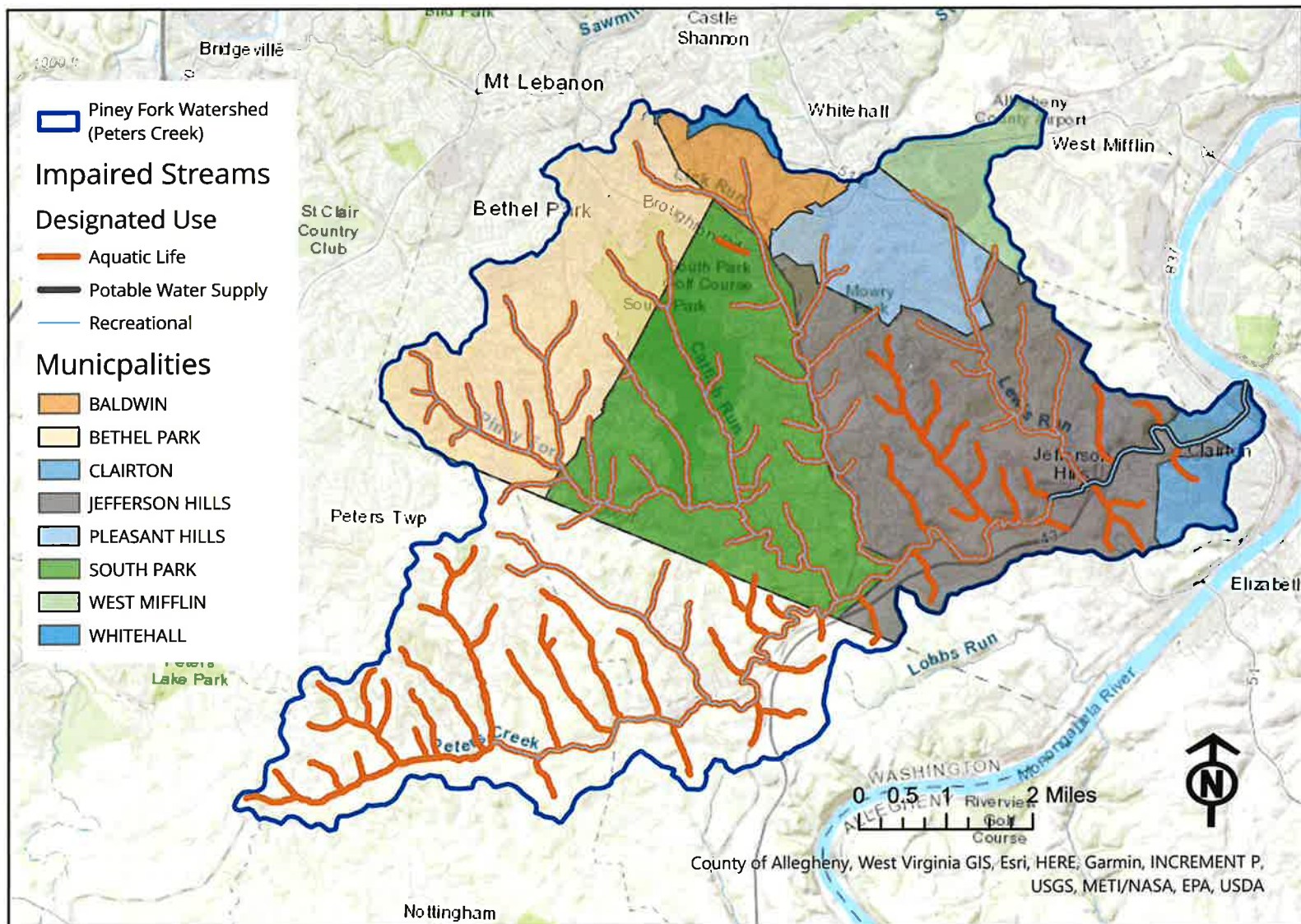


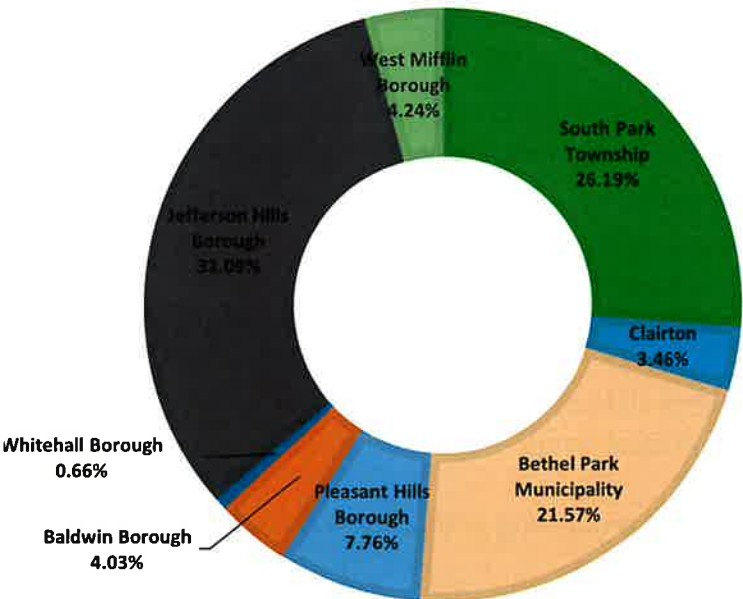
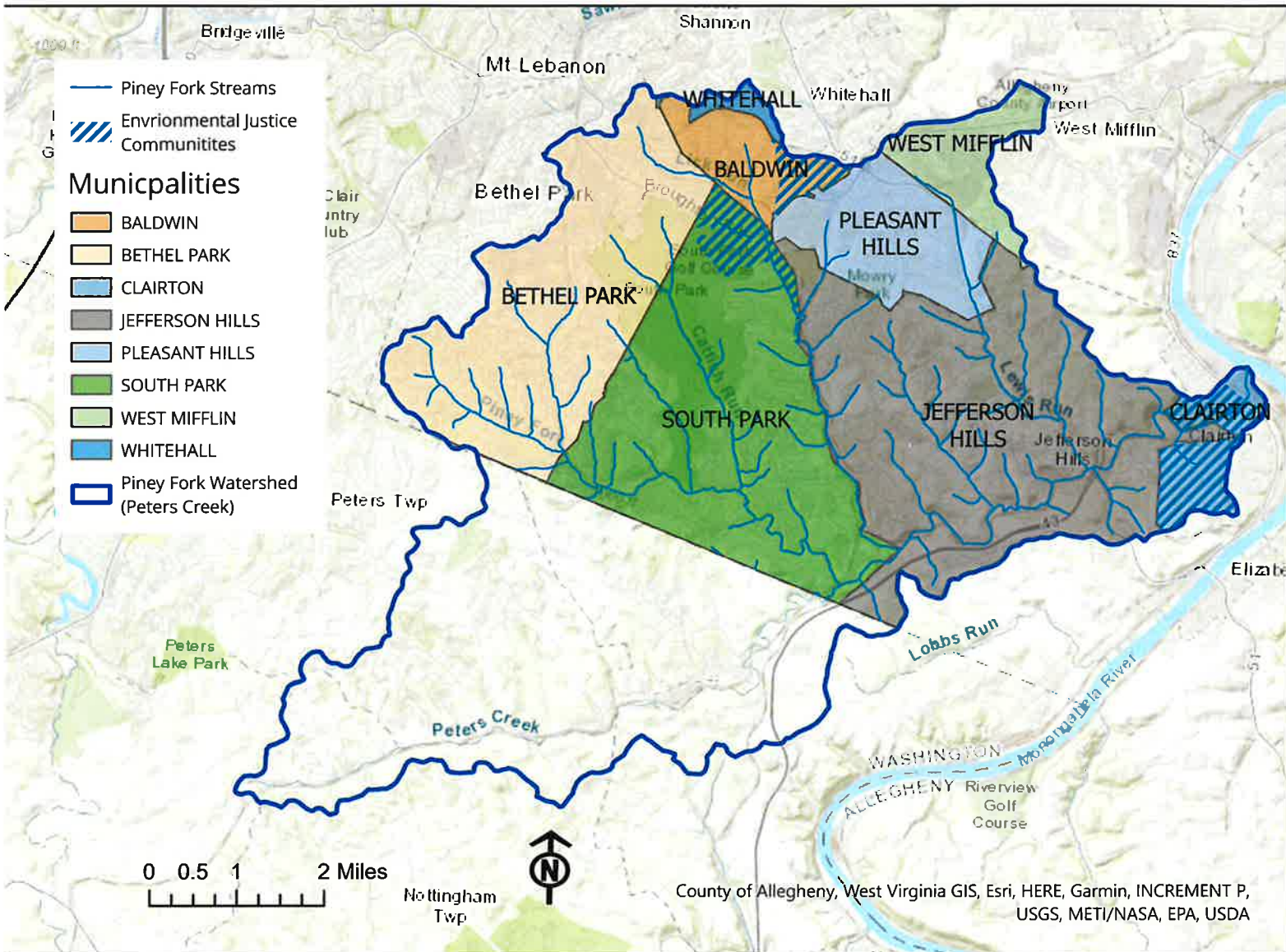
Piney Fork Watershed (Peters Creek) Stream Assessment Map



Water quality is monitored for physical, chemical and biological factors. The monitoring results are assessed against EPA approved water quality standards or thresholds. Attaining streams are waterbodies fully supporting their designated uses under the Clean Water Act as opposed to impaired waters that are not fully supporting their designated uses under the Clean Water Act. Some streams in this watershed are impaired for the following designated uses:

- **Aquatic life:** This describes the status of fish, macroinvertebrates, plants, and animals that live in the water.
- **Fish Consumption:** The fish consumption use means that eating fish and/or shellfish caught in impaired waters can pose health risks and local health departments should be consulted for posted fish advisories.
- **Recreation:** This determines if a waterbody is safe for swimming and other recreational activities.

Piney Fork Watershed (Peters Creek)



Watershed Information

The Pie chart show the percentage of Allegheny County Watershed Area in each municipality.

Watershed Area: 51.43 mi² (32916 acres)

- Allegheny County Area: 35.57 mi² (22762 acres)
- 69% of the Total Watershed Area

Environmental Justice Areas are mapped by PA DEP to accurately identify communities facing environmental justice issues using more than 30 environmental, health, and socioeconomic indicators.

Allegheny Co. Environmental Justice Area: 2.15 mi² (1379 acres)